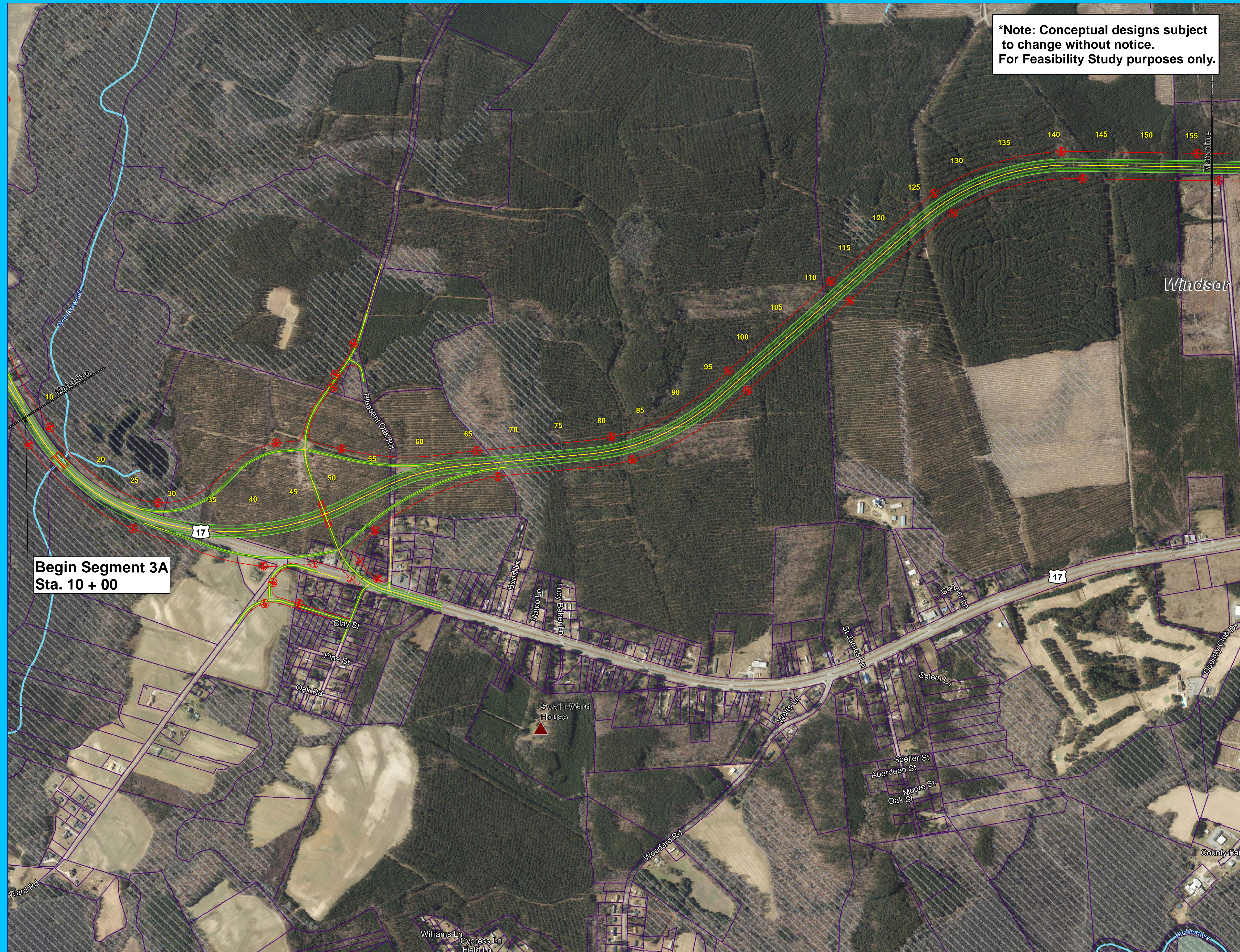


Feasibility Study US-13/17 Upgrade to Interstate Williamston to NC/VA line Segment 3A

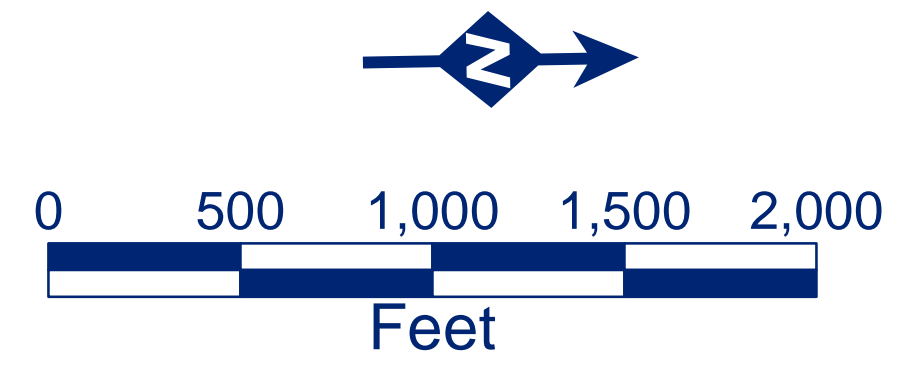
***Note: Conceptual designs subject to change without notice. For Feasibility Study purposes only.**



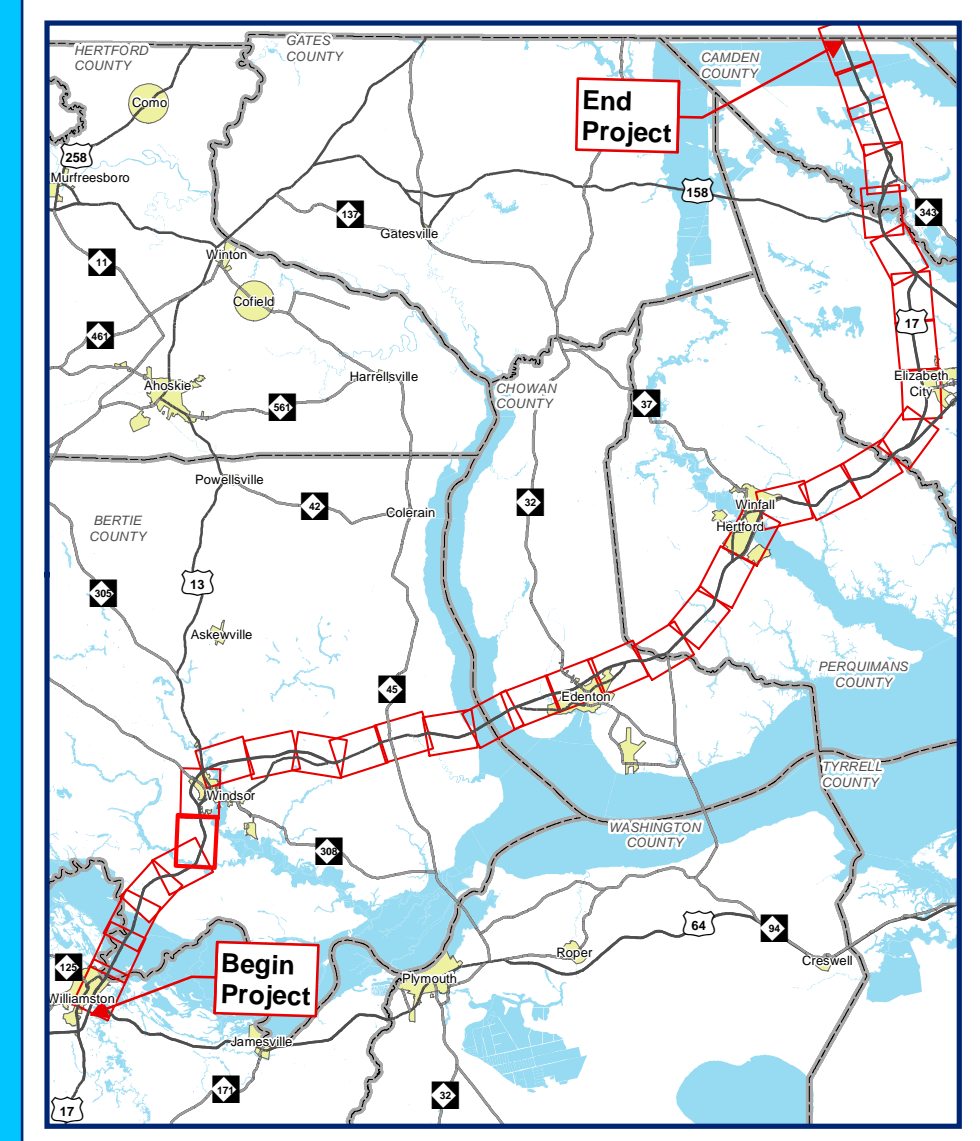
**Begin Segment 3A
Sta. 10 + 00**

Legend

- Matchlines
- Proposed Bridges
- Proposed Edge of Travel
- Proposed Horizontal Alignment
- Historic Place (State and National Register)
- County Boundary
- Parcels
- National Wetlands Inventory
- Streams

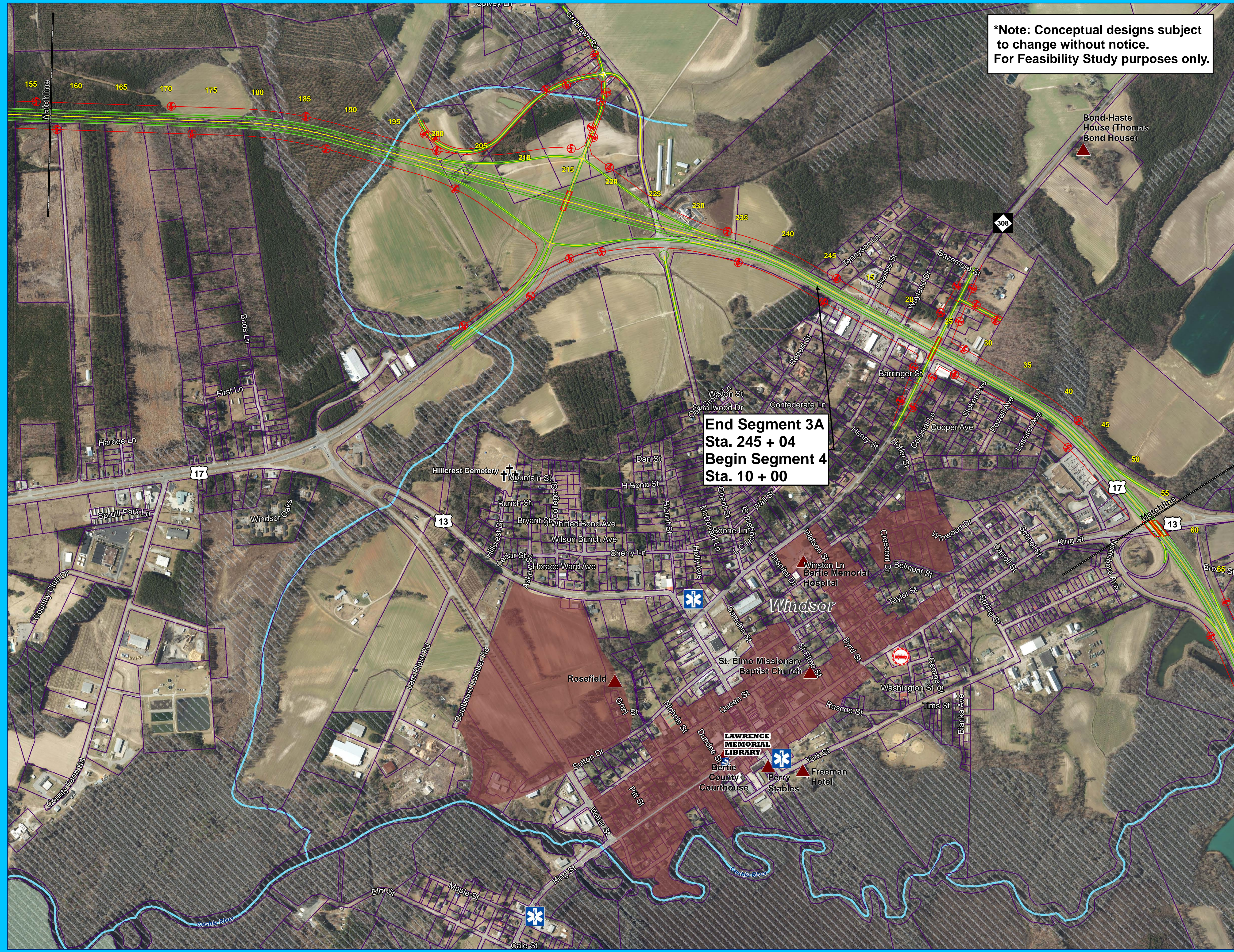


Page Number: 6A



Feasibility Study US-13/17 Upgrade to Interstate Williamston to NCVA line Segment 3A & 4

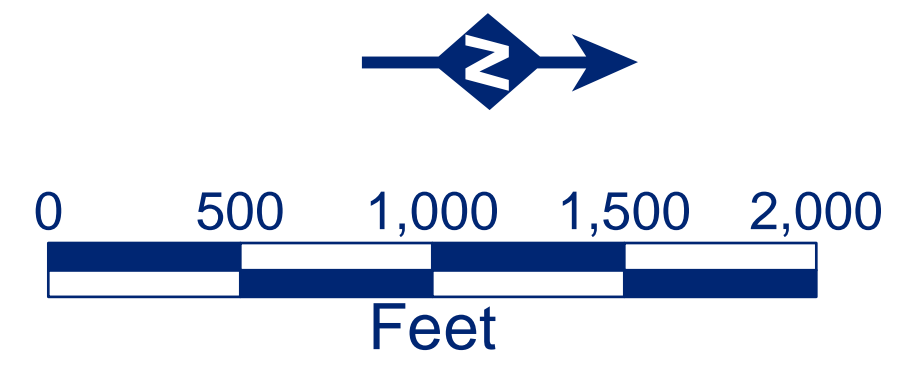
*Note: Conceptual designs subject to change without notice.
For Feasibility Study purposes only.



**End Segment 3A
Sta. 245 + 04
Begin Segment 4
Sta. 10 + 00**

Legend

- Matchlines
- Proposed Bridges
- Proposed Edge of Travel
- Proposed Horizontal Alignment
- Libraries
- Cemeteries
- Fire Stations
- EMS
- Historic Place (State and National Register)
- County Boundary
- Historic Property Boundary
- Parcels
- National Wetlands Inventory
- Streams



Page Number: 7A

