








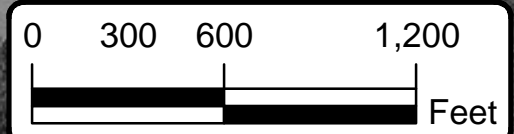


Legend

-  Historic Property
-  Study Corridors
-  Streams Ephemeral
-  Streams
-  Ponds
- Wetlands**
- DWQ Quality**
-  High
-  Low
-  Medium
-  Wetlands Isolated



NORTH CAROLINA DEPARTMENT OF TRANSPORTATION
 DIVISION OF HIGHWAYS
 PROJECT DEVELOPMENT AND ENVIRONMENTAL ANALYSIS BRANCH

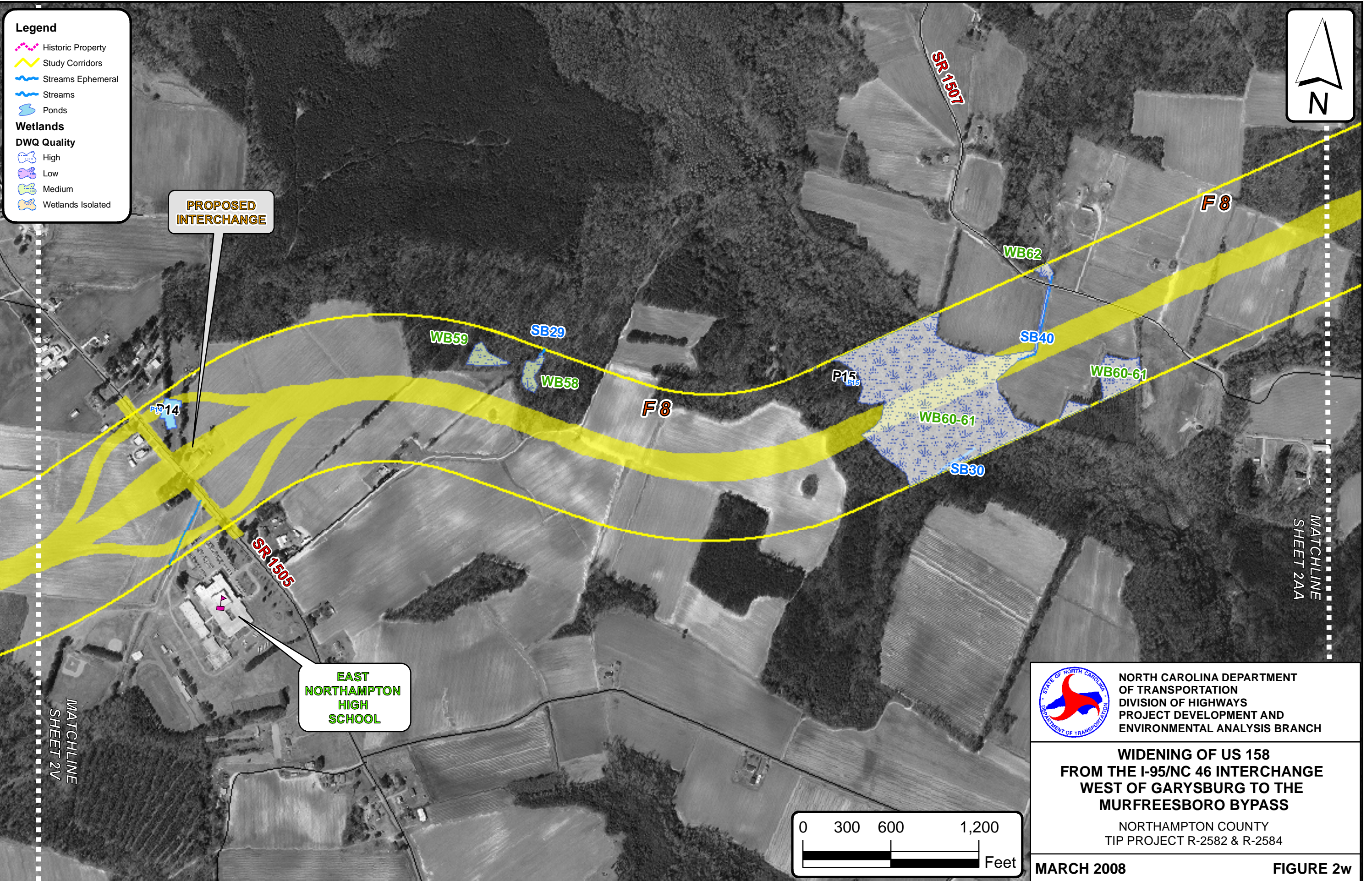
**WIDENING OF US 158
 FROM THE I-95/NC 46 INTERCHANGE
 WEST OF GARYSBURG TO THE
 MURFREESBORO BYPASS**

NORTHAMPTON COUNTY
 TIP PROJECT R-2582 & R-2584

MARCH 2008

FIGURE 2v

BY:
J.TORTORELLA




Legend

- Historic Property
- Study Corridors
- Streams Ephemeral
- Streams
- Ponds
- Wetlands**
- DWQ Quality**
- High
- Low
- Medium
- Wetlands Isolated

PROPOSED INTERCHANGE

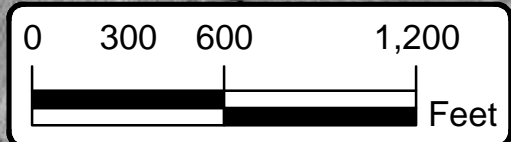
EAST NORTHAMPTON HIGH SCHOOL



NORTH CAROLINA DEPARTMENT OF TRANSPORTATION
 DIVISION OF HIGHWAYS
 PROJECT DEVELOPMENT AND ENVIRONMENTAL ANALYSIS BRANCH

WIDENING OF US 158 FROM THE I-95/NC 46 INTERCHANGE WEST OF GARYSBURG TO THE MURFREESBORO BYPASS

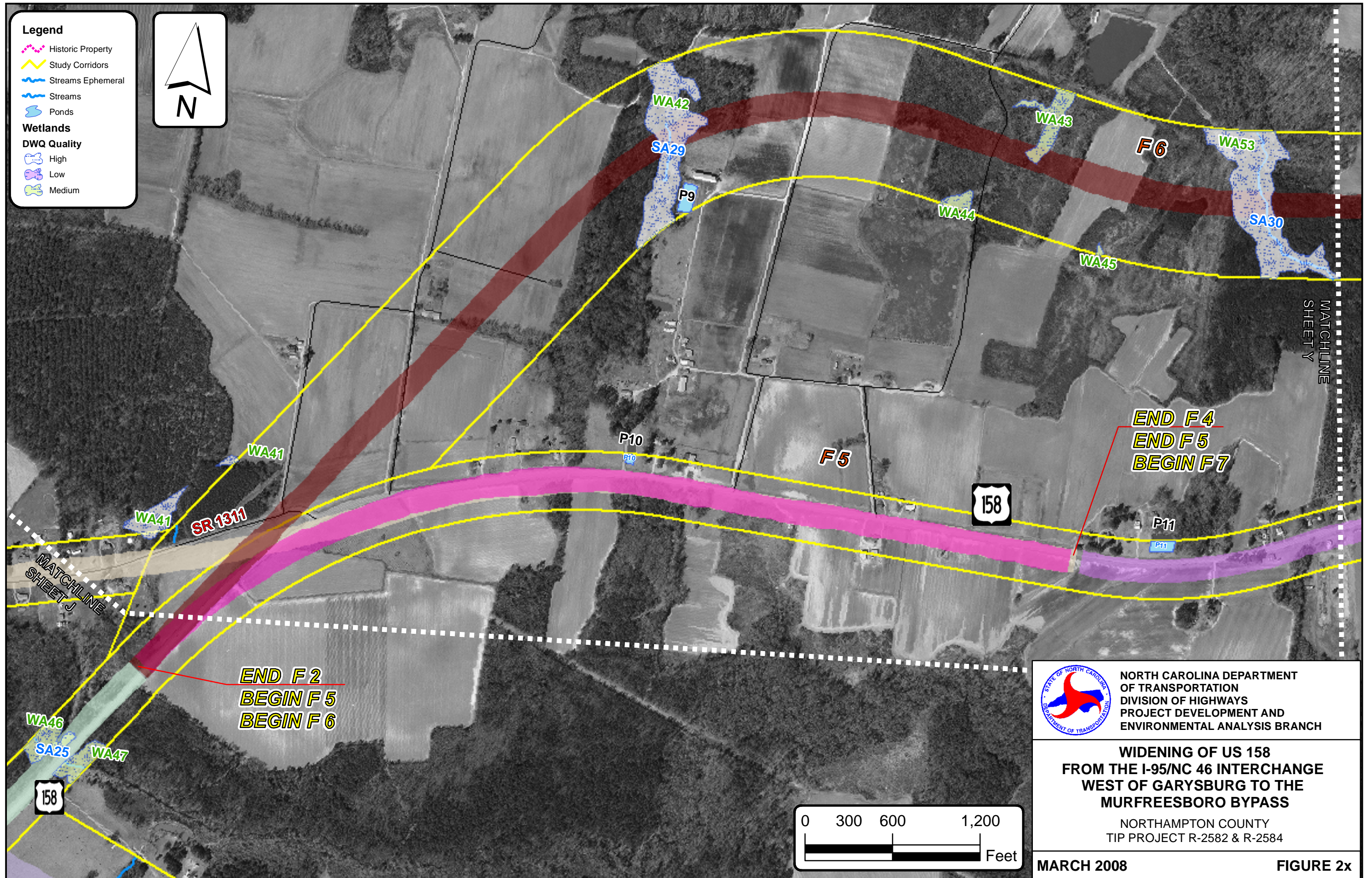
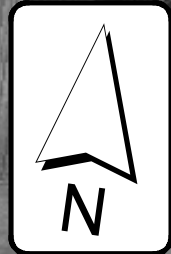
NORTHAMPTON COUNTY
 TIP PROJECT R-2582 & R-2584




BY: J.TORTORELLA

Legend

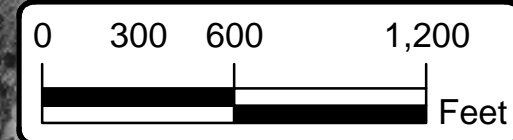
- Historic Property
- Study Corridors
- Streams Ephemeral
- Streams
- Ponds
- Wetlands**
- DWQ Quality**
- High
- Low
- Medium




 NORTH CAROLINA DEPARTMENT OF TRANSPORTATION
 DIVISION OF HIGHWAYS
 PROJECT DEVELOPMENT AND ENVIRONMENTAL ANALYSIS BRANCH

**WIDENING OF US 158
 FROM THE I-95/NC 46 INTERCHANGE
 WEST OF GARYSBURG TO THE
 MURFREESBORO BYPASS**

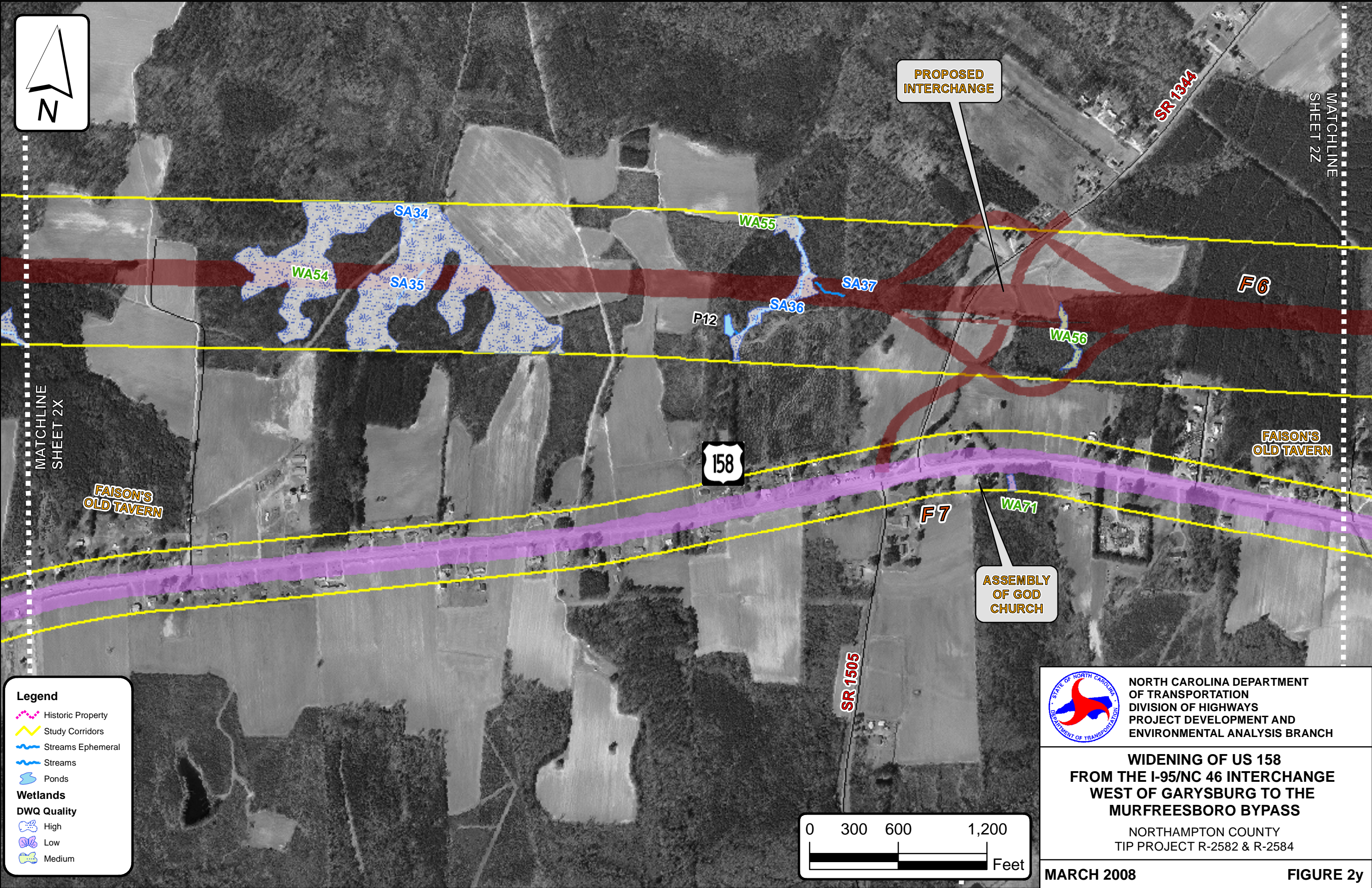
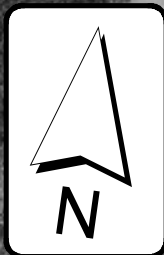
NORTHAMPTON COUNTY
 TIP PROJECT R-2582 & R-2584



MARCH 2008


FIGURE 2x

BY: J.TORTORELLA



Legend

- Historic Property
- Study Corridors
- Streams Ephemeral
- Streams
- Ponds
- Wetlands**
- DWQ Quality**
- High
- Low
- Medium



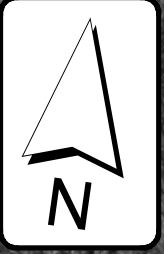
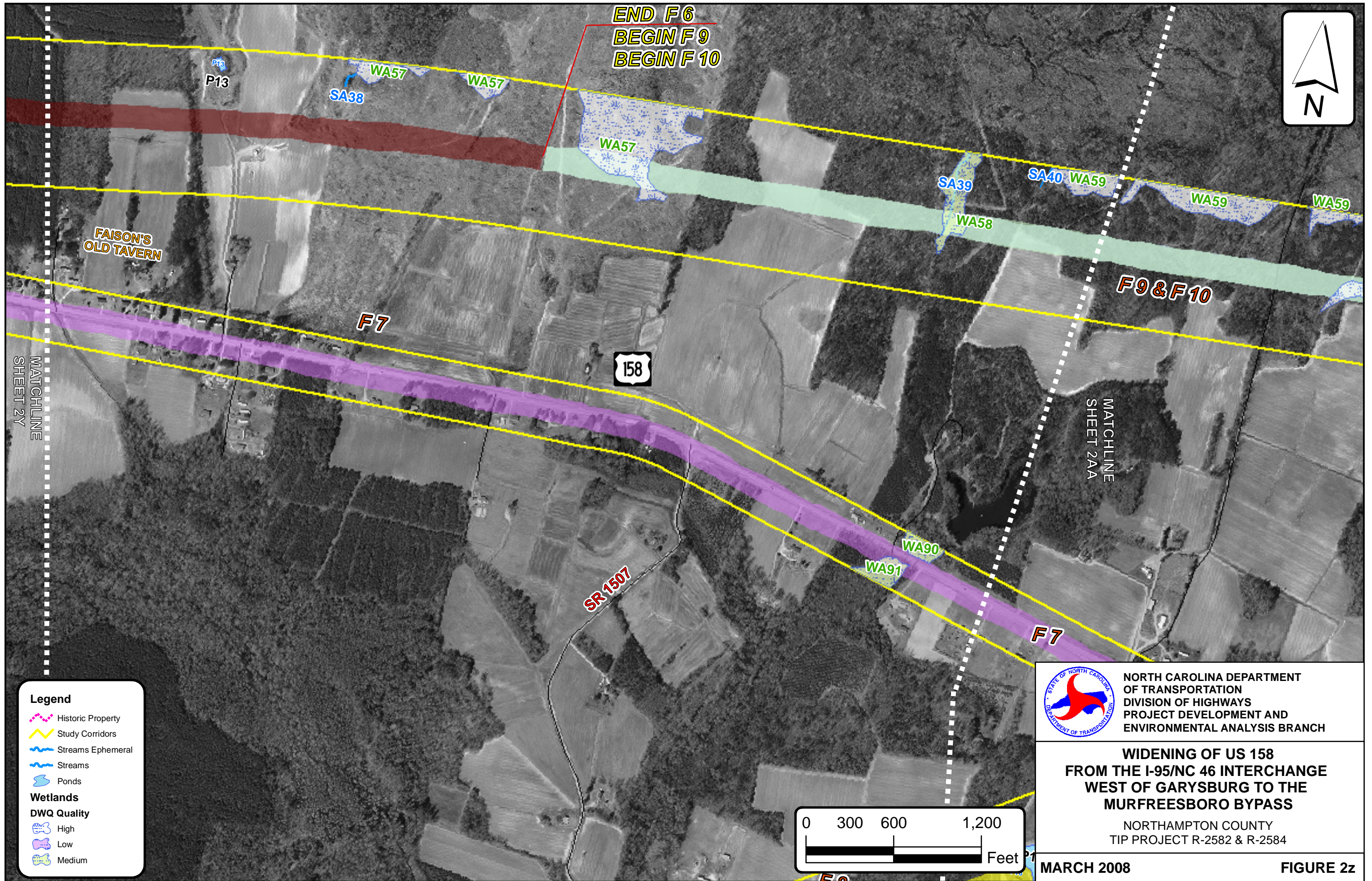
NORTH CAROLINA DEPARTMENT OF TRANSPORTATION
DIVISION OF HIGHWAYS
PROJECT DEVELOPMENT AND ENVIRONMENTAL ANALYSIS BRANCH

**WIDENING OF US 158
FROM THE I-95/NC 46 INTERCHANGE
WEST OF GARYSBURG TO THE
MURFREESBORO BYPASS**

NORTHAMPTON COUNTY
TIP PROJECT R-2582 & R-2584

MARCH 2008 FIGURE 2y

BY:
J.TORTORELLA



END F6
 BEGIN F9
 BEGIN F10

P13

WA57
 SA38

WA57

SA39
 WA58

SA40 WA59

WA59

WA59

FAISON'S
 OLD TAVERN

F7

158

F9&F10

MATCHLINE
 SHEET 2Y

MATCHLINE
 SHEET 2AA

SR 1507

WA90
 WA91

F7


Legend

- Historic Property
- Study Corridors
- Streams Ephemeral
- Streams
- Ponds

Wetlands

DWQ Quality

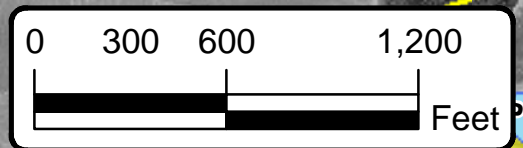
- High
- Low
- Medium



NORTH CAROLINA DEPARTMENT
 OF TRANSPORTATION
 DIVISION OF HIGHWAYS
 PROJECT DEVELOPMENT AND
 ENVIRONMENTAL ANALYSIS BRANCH

**WIDENING OF US 158
 FROM THE I-95/NC 46 INTERCHANGE
 WEST OF GARYSBURG TO THE
 MURFREESBORO BYPASS**

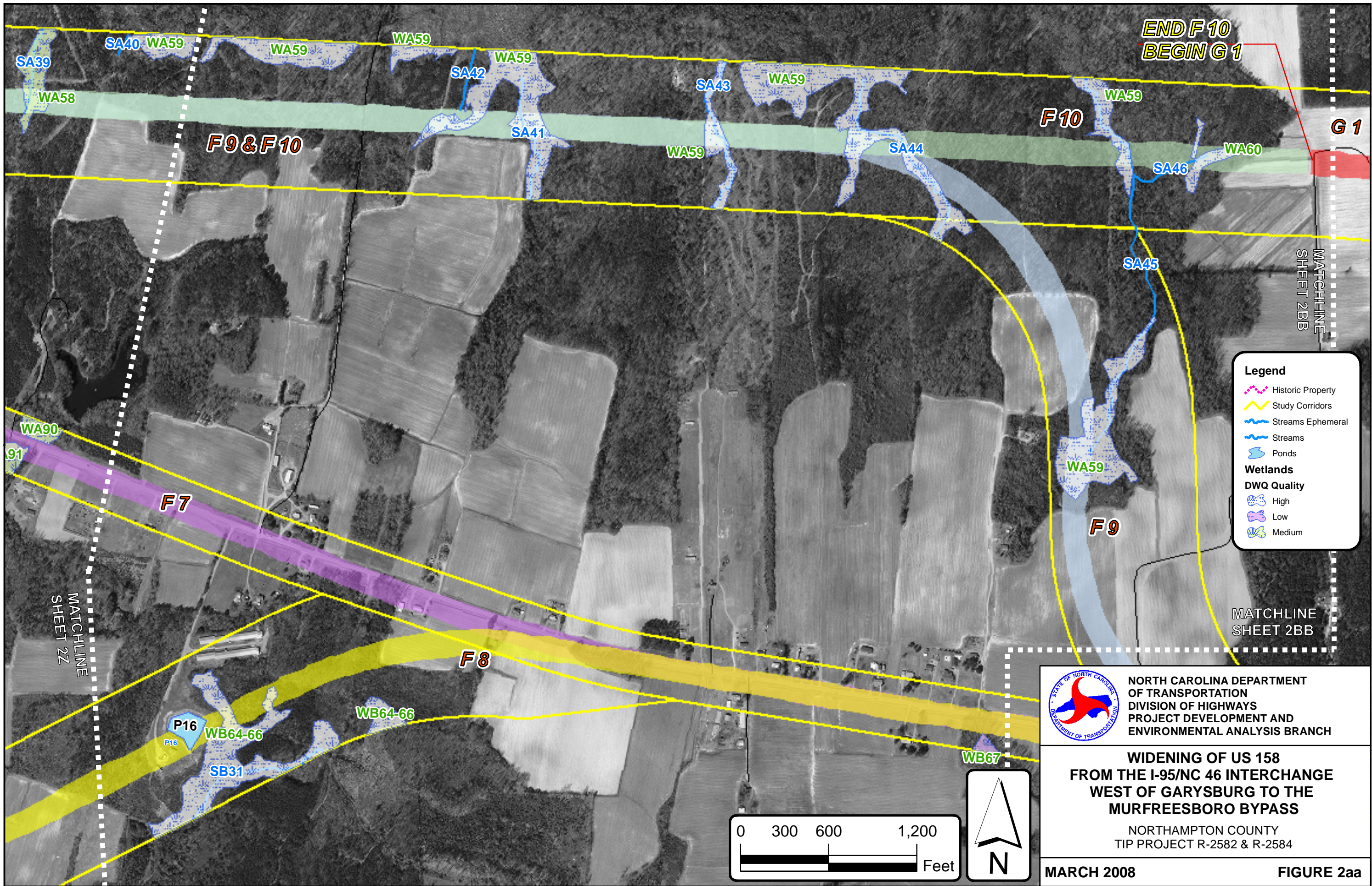
NORTHAMPTON COUNTY
 TIP PROJECT R-2582 & R-2584



MARCH 2008

FIGURE 2z

BY:
 J.TORTORELLA




Legend

- Historic Property
- Study Corridors
- Streams Ephemeral
- Streams
- Ponds

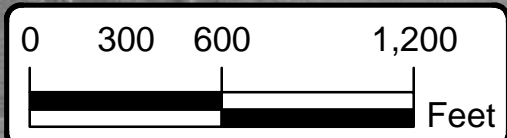
Wetlands

DWQ Quality

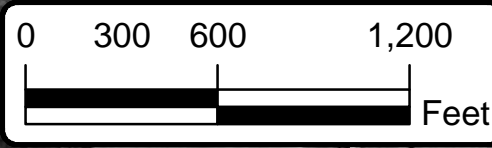
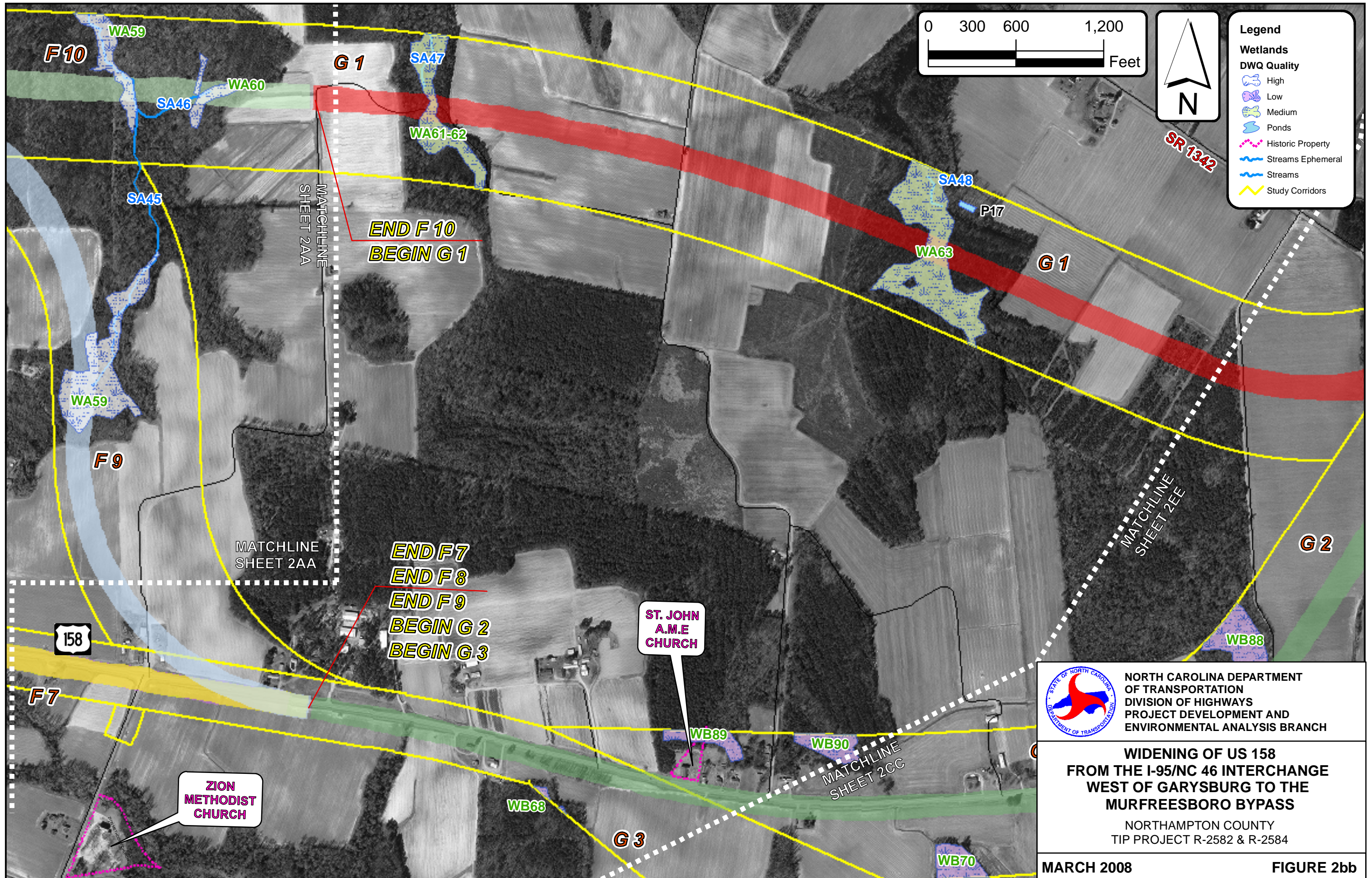
- High
- Low
- Medium


NORTH CAROLINA DEPARTMENT OF TRANSPORTATION
 DIVISION OF HIGHWAYS
 PROJECT DEVELOPMENT AND ENVIRONMENTAL ANALYSIS BRANCH

WIDENING OF US 158
FROM THE I-95/NC 46 INTERCHANGE
WEST OF GARYSBURG TO THE MURFREESBORO BYPASS
 NORTHAMPTON COUNTY
 TIP PROJECT R-2582 & R-2584



BY: J.TORTORELLA



Legend

Wetlands

DWQ Quality


- High
- Low
- Medium
- Ponds
- Historic Property
- Streams Ephemeral
- Streams
- Study Corridors

END F 10
BEGIN G 1

END F 7
END F 8
END F 9
BEGIN G 2
BEGIN G 3

ST. JOHN
A.M.E
CHURCH

ZION
METHODIST
CHURCH



NORTH CAROLINA DEPARTMENT
OF TRANSPORTATION
DIVISION OF HIGHWAYS
PROJECT DEVELOPMENT AND
ENVIRONMENTAL ANALYSIS BRANCH

**WIDENING OF US 158
FROM THE I-95/NC 46 INTERCHANGE
WEST OF GARYSBURG TO THE
MURFREESBORO BYPASS**

NORTHAMPTON COUNTY
TIP PROJECT R-2582 & R-2584