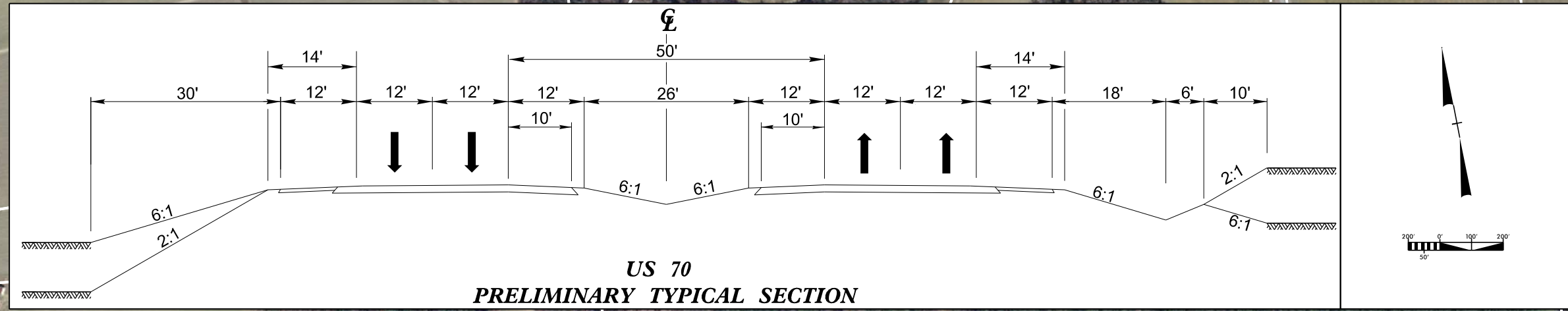
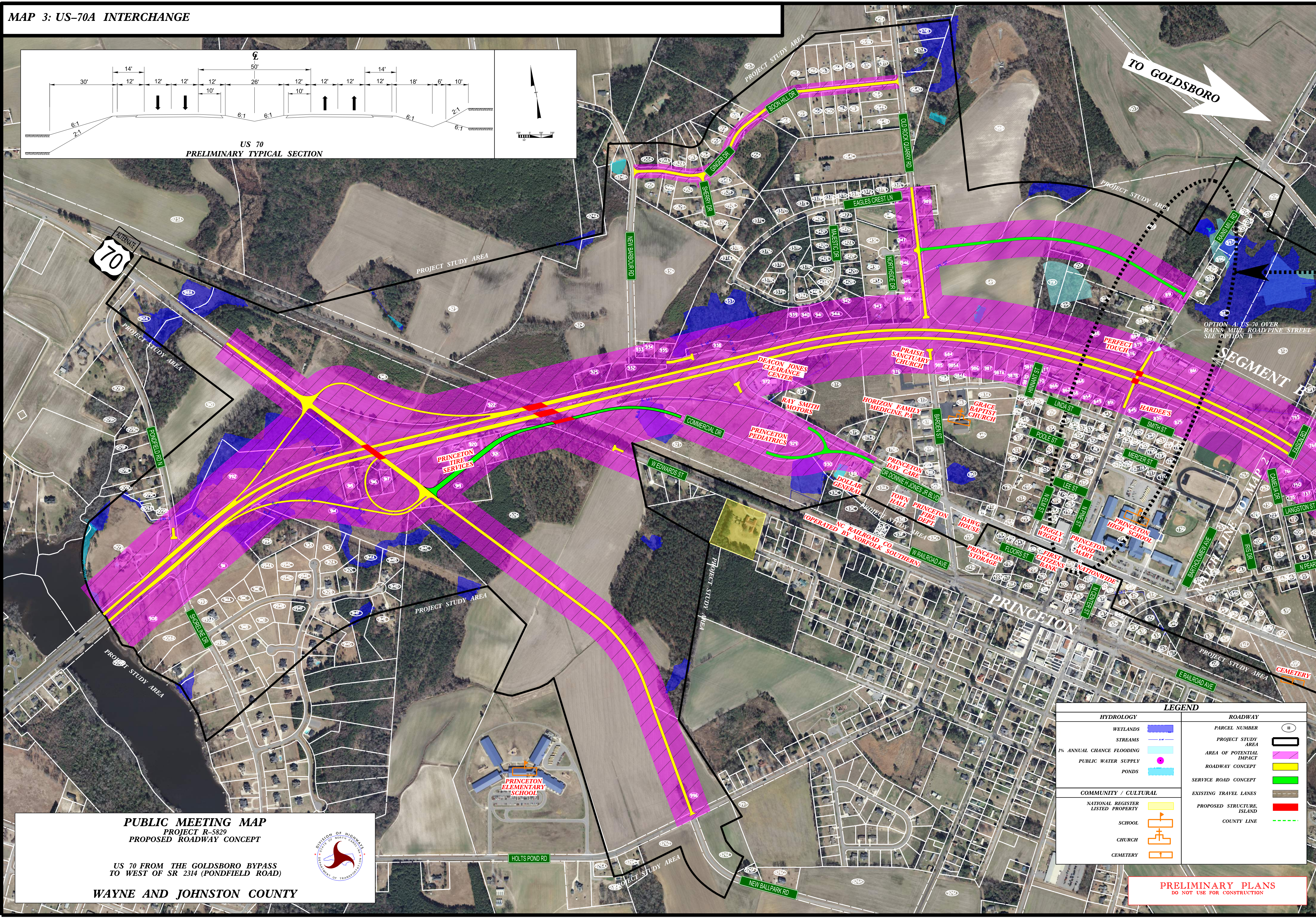
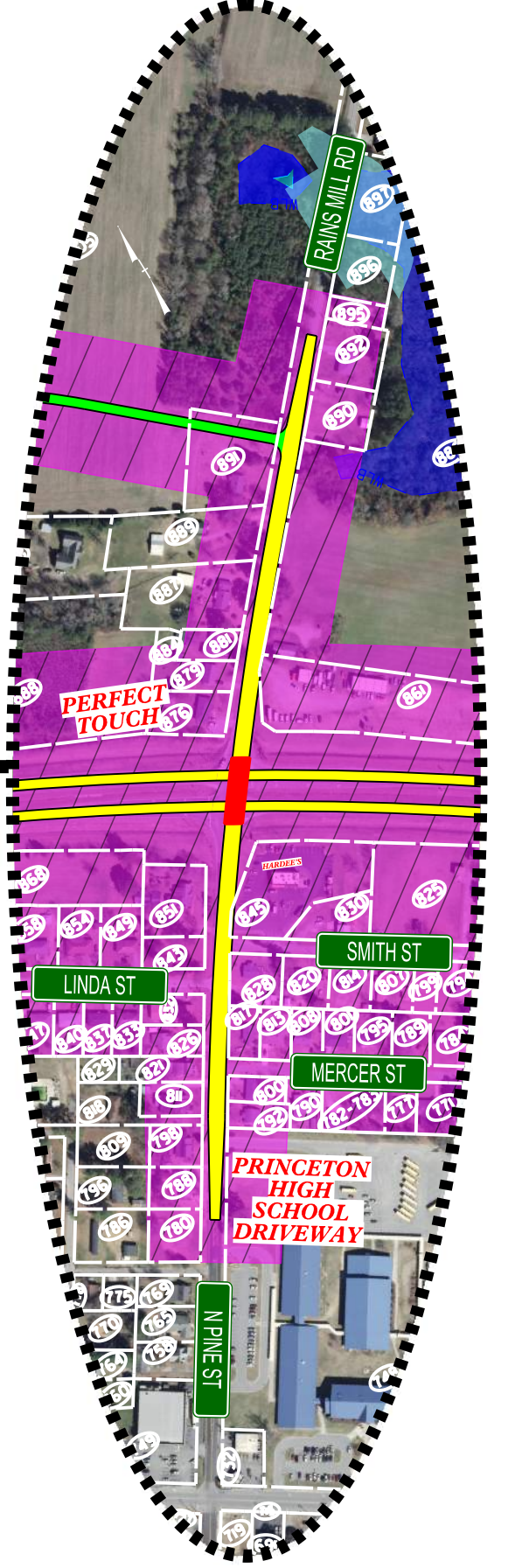


MAP 3: US-70A INTERCHANGE



INSET

OPTION B:
US-70 UNDER RAINS MILL
ROAD/PINE STREET



OPTION A: US-70 OVER
RAINS MILL ROAD/PINE STREET
SEE OPTION B

LEGEND	
HYDROLOGY	ROADWAY
WETLANDS	PARCEL NUMBER
STREAMS	PROJECT STUDY AREA
1% ANNUAL CHANCE FLOODING	AREA OF POTENTIAL IMPACT
PUBLIC WATER SUPPLY	ROADWAY CONCEPT
PONDS	SERVICE ROAD CONCEPT
COMMUNITY / CULTURAL	EXISTING TRAVEL LANES
NATIONAL REGISTER LISTED PROPERTY	PROPOSED STRUCTURE ISLAND
SCHOOL	COUNTY LINE
CHURCH	
CEMETERY	

PUBLIC MEETING MAP
PROJECT R-5829
PROPOSED ROADWAY CONCEPT

US 70 FROM THE GOLDSBORO BYPASS
TO WEST OF SR 2314 (PONDFIELD ROAD)

WAYNE AND JOHNSTON COUNTY

PRELIMINARY PLANS
DO NOT USE FOR CONSTRUCTION