

PRELIMINARY PLANS
DO NOT USE FOR CONSTRUCTION

UTILITIES INFORMATION NOTE:
To provide greater visual clarity existing and proposed utilities are not shown on these maps or on other displays. The utility information shown on these maps is limited to locations of major existing or potential utility easements. The designs shown on these maps, including utility easements, are preliminary and are subject to change.

RIGHT OF WAY NOTE:
Right of way widths are preliminary and are subject to change based on final designs.

DRIVEWAY NOTE:
The limits of construction and their impacts shown on this meeting map are based on preliminary designs and survey information. During the final design stage efforts to minimize impacts, where feasible, will be made using final survey information. Driveway locations will also be determined during final design.



PUBLIC MEETING MAP
STIP PROJECT : P-5713 (46925.1.1)
GUILFORD COUNTY
NORTH CAROLINA RAILROAD (NCRR) /
NORFOLK SOUTHERN RAILROAD,
SR 1424 (HILLTOP RD) IN GREENSBORO
CONVERT AT-GRADE CROSSING TO GRADE SEPARATION



FEBRUARY 2024

MAP 1 OF 1



DESIGN DATA

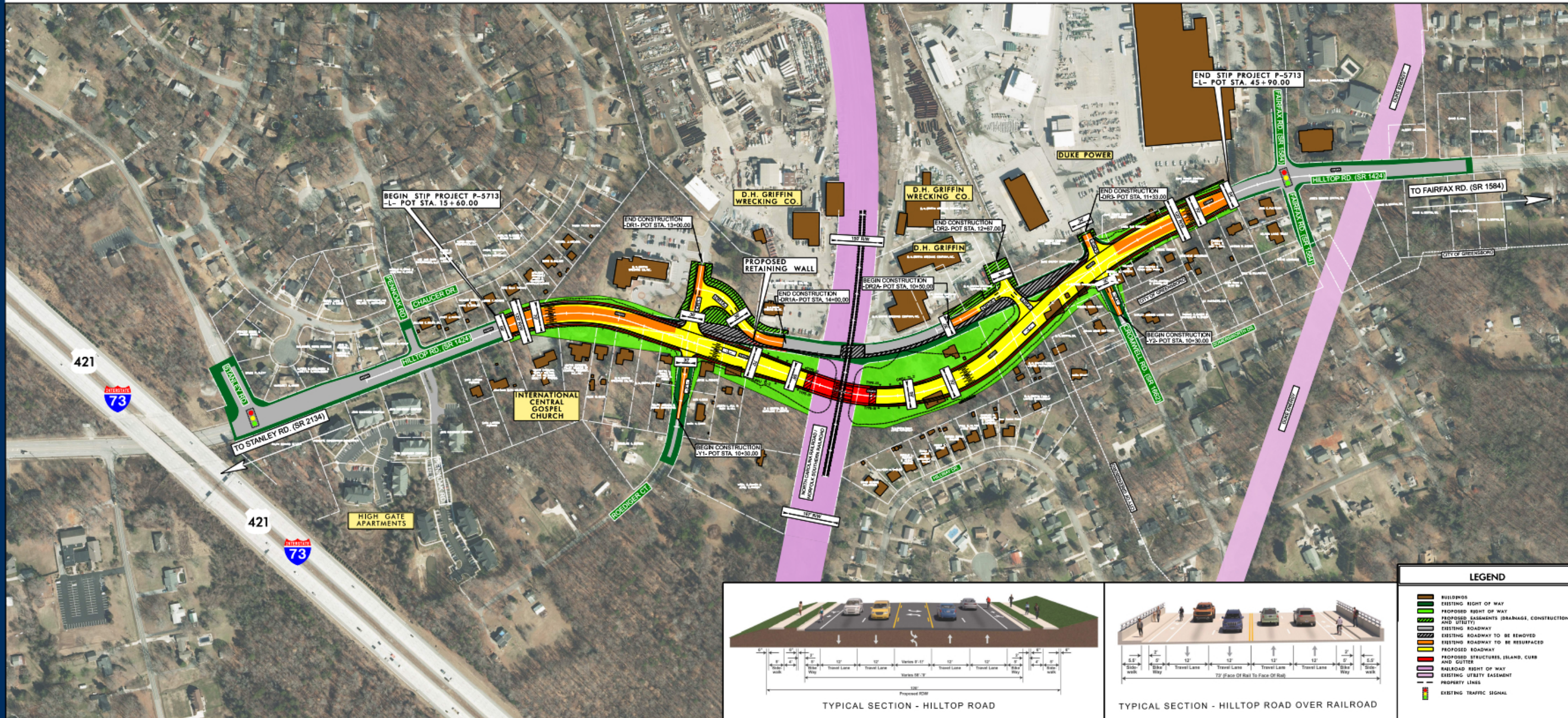
Functional Class.	= MINOR ARTERIAL
Design Speed	= 40 MPH
Max. Superelevation	= 0.04
ADT 2025	= 14,200
ADT 2045	= 15,700



PUBLIC MEETING MAP
STIP PROJECT : P-5713 (46925.1.1)
GUILFORD COUNTY
NORTH CAROLINA RAILROAD (NCRR) /
NORFOLK SOUTHERN RAILROAD,
SR 1424 (HILLTOP RD) IN GREENSBORO
CONVERT AT-GRADE CROSSING TO GRADE SEPARATION

FEBRUARY 2024

MAP 1 OF 1



PUBLIC MEETING MAP
STIP PROJECT : P-5713 (46925.1.1)
GUILFORD COUNTY
NORTH CAROLINA RAILROAD (NCRR) /
NORFOLK SOUTHERN RAILROAD,
SR 1424 (HILLTOP RD) IN GREENSBORO
CONVERT AT-GRADE CROSSING TO GRADE SEPARATION

FEBRUARY 2024

MAP 1 OF 1



IMAGERY SOURCE:
NC OneMap 2022