

# NCDOT ROADWAY PUBLIC HEARING MAP

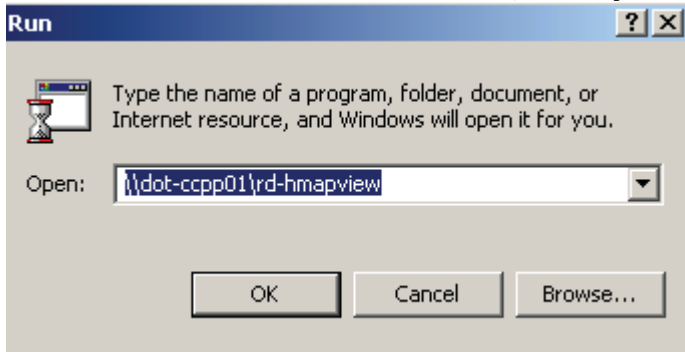
## CHAPTER 21: HEARING MAP POST PRODUCTION

### Hearing Map Preview

This procedure employs a system called the Raster Offline Driver Pack. It provides a virtual "plotting queue" to which plots can be sent, but are not put on paper. The "plot" product is actually an image file in the JPEG format. The image file can be displayed on the local workstation for review, and will reflect the actual color and level priorities as seen on the final color paper plots. This method is far more reliable and accurate than trying to use the Preview option under IPLOT.

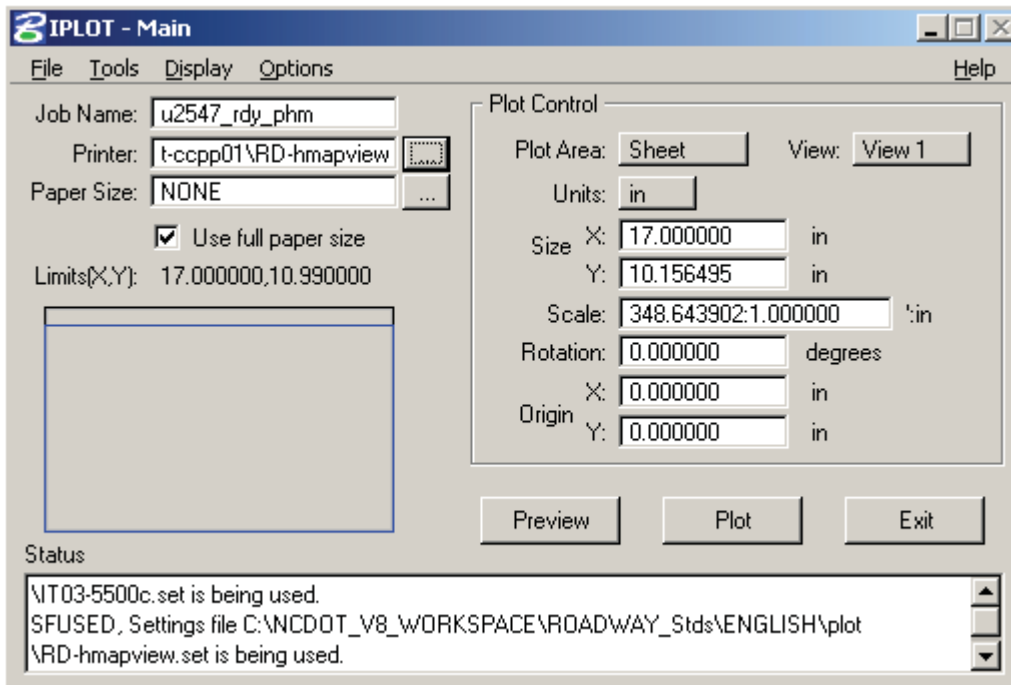
#### Step 1:

Connect the Printer. Go to **Start > Run**, and key-in `\\dot-ccpp01\rd-hmapview`.



#### Step 2: Plotting (Creating) the Image file

Open the hearing map DGN with Microstation and navigate to the hearing map sheet model. Start IPLOT and select the printer rd-hmapview. Click Plot to create a JPEG. You can also click Preview to look at the hearing map file without creating the JPEG.



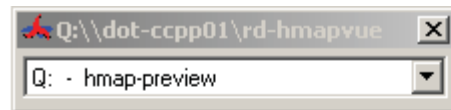
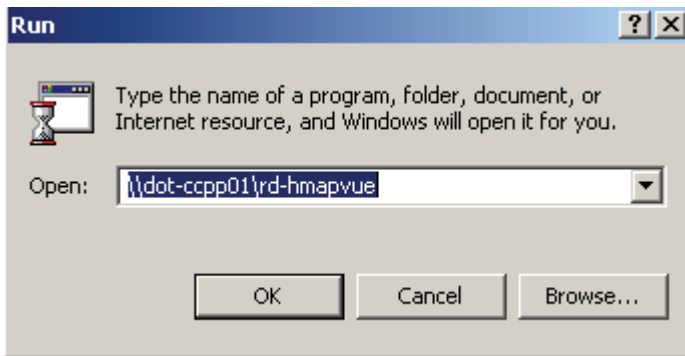
# NCDOT ROADWAY PUBLIC HEARING MAP

### Step 3.

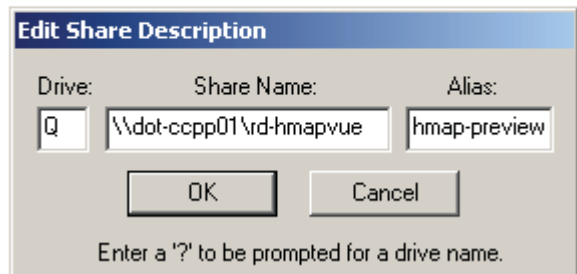
Last, If the hearing map image file has been created (by clicking Plot instead of Preview), then a JPEG is created in this folder.

**\\dot-ccpp01\rd-hmapvue**

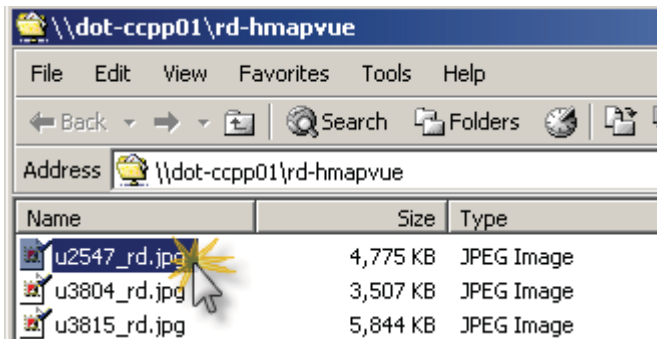
To go to this folder, click **Start** then **Run** and key-in the above path. Click **OK**.



As an option, you can store this path in Mapdrive and use the drive the letter “Q” to instantly access this folder anytime.



Double-click on the JPG file to open the picture.



Sometimes Windows has problems opening JPG files with Windows default imaging program. Ask for Irfanview to be loaded on your machine if this is the case.

# NCDOT ROADWAY PUBLIC HEARING MAP

## **Hands on Review**

1. Navigate to **RDY PHM Sheet 1** file model.
2. Go through the steps to create an image file (JPG) of the hearing map sheet 1. Do not click on the **PLOT** button. Instead click on the **PREVIEW** button on the final step.

# NCDOT ROADWAY PUBLIC HEARING MAP

## Final Hearing Map Plotting by Photogrammetry



STATE OF NORTH CAROLINA  
DEPARTMENT OF TRANSPORTATION

MICHAEL F. EASLEY  
GOVERNOR

LYNDO TIPPETT  
SECRETARY

March 22, 2007

MEMORANDUM TO: Roadway Design Project Engineers  
Roadway Design Project Design Engineers

FROM: *Dewayne Sykes*  
Dewayne Sykes, PE  
Asst. State Roadway Design Engineer

SUBJECT: Plotting Public Hearing Maps

In an effort to provide a consistent quality of Hearing Maps for the public and make good use of Photogrammetry's new plotters and higher quality paper, the following changes are being implemented.

All plots for the Hearing Map Review Meetings and the Final Hearing Maps for the Public Hearing will be plotted on Photogrammetry's HP matte paper. These plots will be still submitted through Roadway CADD. In order for Photogrammetry to meet this policy, the following changes will be implemented to allow time for these maps to be processed and plotted.

1-3 copies (full or half): Hearing Maps will be submitted to Roadway CADD support two (2) working days in advance.

4-12 copies (full or half): Hearing Maps will be submitted to Roadway CADD support 5 (five) working days in advance.

Exceptions to the above turn around times will require notification from the State Roadway Design Engineer to the State Photogrammetric Engineer. Roadway Design will be notified of work ready for pickup the morning after the plotting has been completed. If the order was an exception to the normal turn around times as described above, the requestor will be notified as soon as work is completed.

Hearing Map plots that will not be used at the Public Hearings or Hearing Map Review Meetings may still be plotted through IT. Please let me know if you have any questions.

jm/DLS

cc: Art McMillan, PE  
Keith Johnston, PE  
Jay Bennett, PE  
Ron Allen, PE  
Scott Blevins, PE