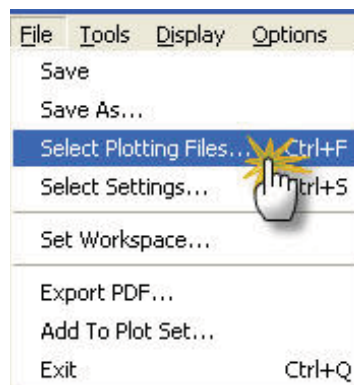
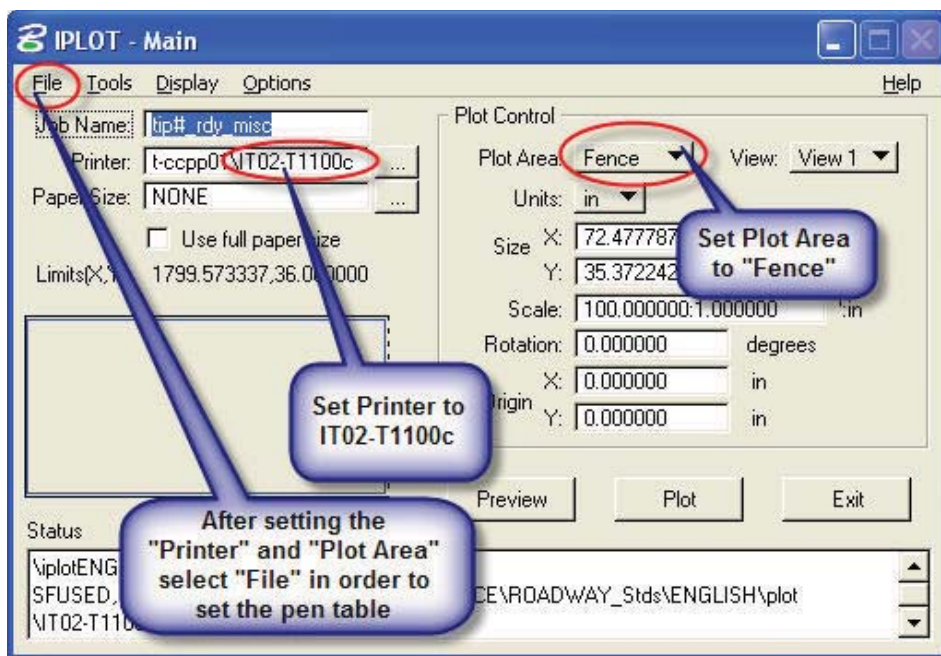


# Plotting a Miscellaneous Map

## STEP 1. Prepare your plot settings

Select Iplot then:

- Select the IT02-T1100c printer
- Set your Plot Area
- Select File then Select Plotting Files



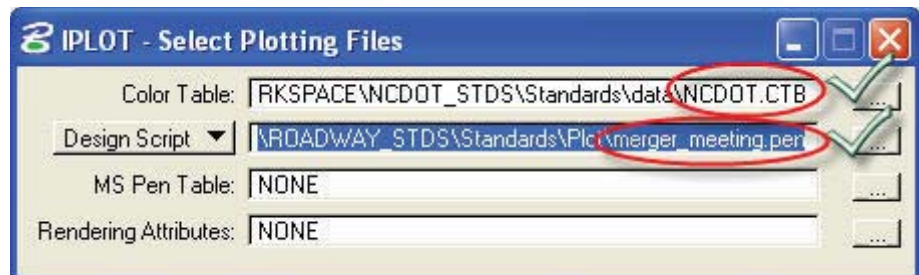
# Plotting a Miscellaneous Map

## STEP 2. Verify you have the correct plot settings

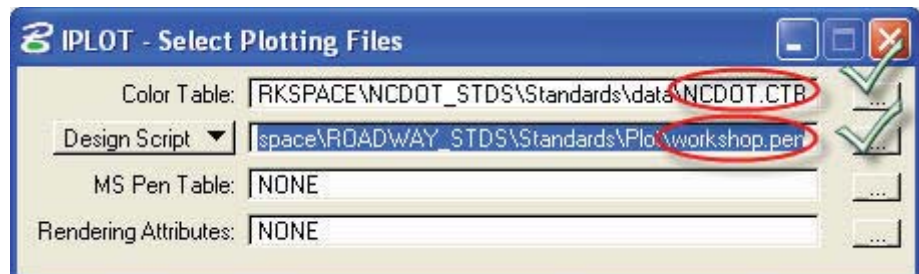
Select the appropriate pen table (The NCDOT color table will be used for all following maps:)

- Merger meeting - merger\_meeting.pen
- Workshop – workshop.pen
- Miscellaneous- type in the word “NONE”
- Path:  
**NCDOT\_V8\_WORKSPACE\ROADWAY\_STDS\Standards\Plot**

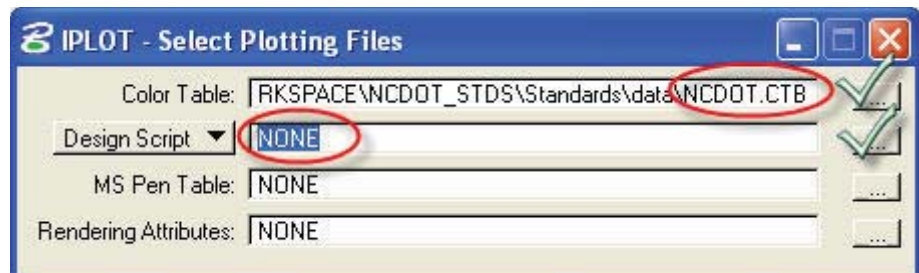
### Merger



### Workshop



### Miscellaneous



# Plotting a Miscellaneous Map

## STEP 3. Send your Plot

